



BMDS

DAS-6008

Cart Mounted System



The small size of this convenient data acquisition system fits tight workspaces and the full-size series 6000 display makes viewing easy from almost any angle. Use the DAS-6008 with any advanced 6000 or 7000 series Smart Probe to process data collected from our Implantable Programmable Temperature Transponder™ (IPTT), the read/write non-temperature sensitive IPT, or the standard Implantable Micro Identification™ (IMI) transponders. Primarily a data control module, the DAS-6008 collects data from various sources and routes data into a single file for transmission or storage. Ideal for use on a pure data collection cart, a single Control Mode key limits unauthorized or accidental use of higher level features and prevents accidental changing of standard setup.

Connectivity options include two USB type interfaces, one a standard serial data type, enabling connection of peripheral devices such as calipers and scales, and the other a unique keyboard type. Plug into any device that has a USB keyboard and output data will appear as a key-stroke—a real asset when working with Macs or PDA's. In the Keyboard mode, plug a standard PS-2 keyboard directly into the DAS-6008 for user interface and control. You can do set-up, enter ID codes, notes and observations, and program transponders using the expanded flexibility of a standard computer keyboard, including macro-F keys to access important functions quickly and speed along commonly used processes. Normal collection mode releases

the keyboard control and the unit acts as a simple data wedge. Designed to fit tight areas where space is at a premium, the DAS-6008 Cart Mounted System packages big performance, flexible connectivity and a large easy reading display in the smallest space practical.

The DAS-6008 requires the use of a Smart Probe. Please contact BMDS for further details.

Features & Benefits

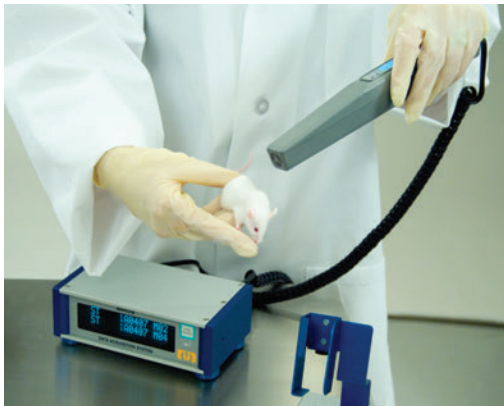
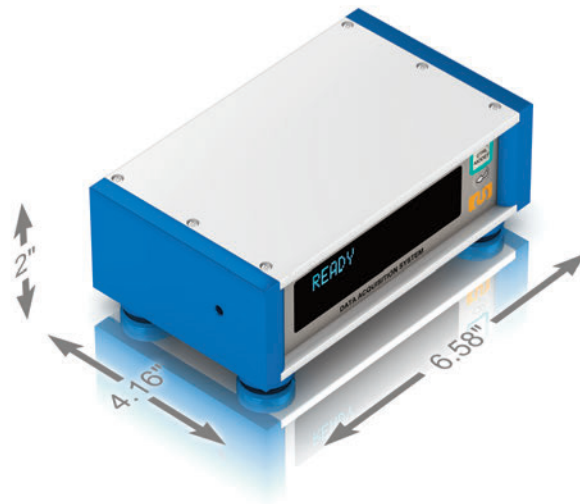
- Compatible with both read-only IMI and programmable read/write IPTT & IPT transponders
- Programs IPT & IPTT transponders to provide user-defined information
- Data Port includes: Smart Probe Input RJ11, (2) RS-232 Serial Input Ports, PS-2 Keyboard Input & Output, USB Device Output, USB Standard Output, RS-232 Serial Output
- Easy reading Vacuum Fluorescent Display (with two large character display lines)
- Set-up only via external keyboard, preventing accidental changes
- Automated ID sequencing, by single and group sequences
- Built in date and time
- Built in help menus prompt user for easy operation
- Powers up automatically when cart power is applied & via the front panel soft switch

www.BMDS.com

DAS-6008 Functional Overview



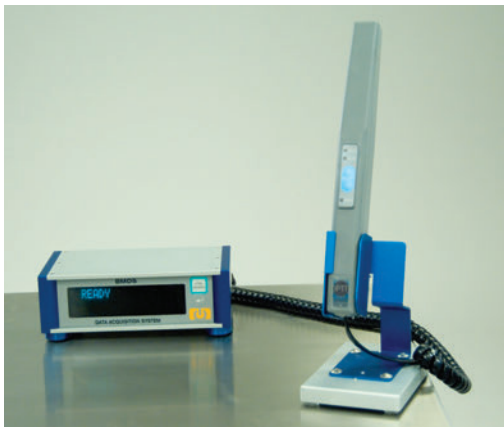
Ideal for use on data collection carts



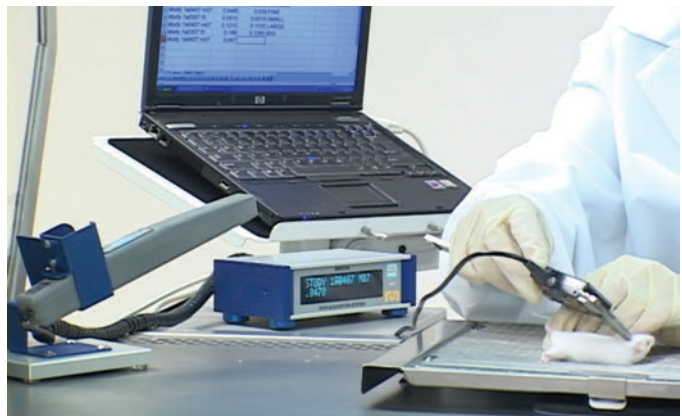
Use with any Smart Probe



*Images are not to scale



Small footprint, huge capabilities



Easy equipment integration



World Headquarters
 Bio Medic Data Systems, Inc.
 1 Silas Road
 Seaford, Delaware 19973 U.S.A.
 Telephone: (302) 628-4100
 Toll Free: (800) 526-2637
 FAX: (302) 628-4110
 www.BMDS.com

Visit us online at www.BMDS.com for the latest information, specifications, demonstrations, training and more!

Positive Animal Identification

© Copyright Bio Medic Corporation 2013, BMDS, Implantable Programmable Temperature Transponder, and the BMDS logo are trademarks of Bio Medic Data Systems, Inc. Covered by various U.S. and International patents and patents pending. U.S. Patent Nos. 5,481,262; 5,422,636; 5,074,318; 5,024,727; 5,252,962; 5,274,030; 5,420,579; 5,250,944; 5,262,772; DES. 351,151; DES. 330,891; 5,650,778; 5,002,548; 4,787,384; DES. 358,644. Design and specifications are subject to change without notice.