



BMDs

LADS-100m

Ergonomic Mobile Workstation

Developed for use in biomedical research environments, the LADS-100m ergonomic mobile workstation facilitates the safe handling and weighing of laboratory animals like dogs and primates. Safety, convenience, and ergonomics were top priorities during development and are immediately evident in the final product.

4 inch in diameter x 1-1/4 wide casters, glide on precision ball bearings for easy rolling. Once LADS-100m is positioned, foot operated pedals lock the two front wheels - for safety during use - securing the cart in place for the weighing process. The 18 inch square weighing platform is wide and safe to step on while holding an animal. Standard features include a 30 foot long AC power cable and a 5-outlet power strip, located inside the storage cabinet.

Superior design, efficient operation, and a space-saving footprint make the LADS-100m ergonomic mobile workstation lab-friendly—even for space-challenged facilities—and the 6105-T5 High Tensile Strength Aluminum frame construction provides strength and durability for years of reliable service.

As an optional accessory, a durable plastic weighing box placed on top of scale to hold specimens is available. Monitor, Scale Display, Keyboard, Scale and weight are all furnished by customer and are featured for illustration purposes only.

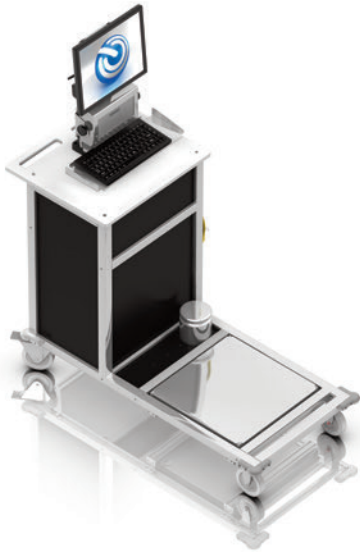


Features & Benefits

- Casters, 4-inches in diameter x 1-1/4 wide; 2 in-line and 2 swivel w/total lock
- 30 ft. long AC cord and 5 outlet power strip are installed in cabinet (International models are available upon request)
- Monitor, Scale Display and keyboard tray rotate 360 degrees, simultaneously
- Optional mounting of probe holder on right and/or left side of keyboard tray
- Enclosed 1 shelf cabinet with spring loaded hinge door
- T-slot Aluminum Construction Frame

www.BMDs.com

LADS-100m Functional Overview



Physical Characteristics

Weight: 175 lbs.
 Length: 52 inches Long
 Height: 62 inches high keyboard tray from floor
 Width: 24 inches Wide

18 inches square weighing platform is wide and safe to step on with an animal

Casters on precision ball bearing; 4 inches in diameter x 1 1/4 inches wide

2 in-line casters, 2 swivel with total lock, secures the cart for weighing function

30 foot long AC cord and a 5-outlet power strip are installed in the cabinet (International models are available upon request)

Optional lightweight durable plastic box for placing animals on scale is available

Warranty

90 Days parts & labor

Design and specifications are subject to change without notice. Please visit us on the web at www.BMDS.com for the latest information, specifications, demonstrations, training and more!



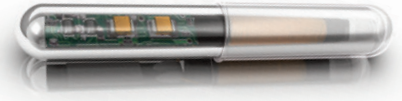
DAS-8001

Related Products

IMI-1000



IPT-300



IPTT-300



Enlarged to show details



DAS-7006/7r



World Headquarters
 Bio Medic Data Systems, Inc.
 1 Silas Road
 Seaford, Delaware 19973 U.S.A.
 Telephone: (302) 628-4100
 Toll Free: (800) 526-2637
 FAX: (302) 628-4110
www.BMDS.com

Visit us online at www.BMDS.com for the latest information, specifications, demonstrations, training and more!

Positive Animal Identification

© Copyright Bio Medic Corporation 2013, BMDS, Implantable Programmable Temperature Transponder, and the BMDS logo are trademarks of Bio Medic Data Systems, Inc. Covered by various U.S. and International patents and patents pending. U.S. Patent Nos. 5,481,262; 5,422,636; 5,074,318; 5,024,727; 5,252,962; 5,274,030; 5,420,579; 5,250,944; 5,262,772; DES. 351,151; DES. 330,891; 5,650,778; 5,002,548; 4,787,384; DES. 358,644. Design and specifications are subject to change without notice.