



**BMDs**

# MEO-6000m

**Smart Cart Mobile Workstation**

A convenient mobile platform for your data processing equipment, the lightweight MEO-6000m is our newest addition to our cart product line. Constructed of lightweight materials, gliding on large polyurethane wheels, the smart design of the MEO-6000m, makes it a welcome addition to any research lab.

The top work surface trays overlap the frame and easily reposition left to right for user convenience and personal preferences. Dual mounting posts extend vertically above the top work surface and provide ergonomically desirable locations for securing flat screen displays, keyboard, hand-held scanners and other RFID reader system components. A second shelf offers space for an electronic balance or similar devices and a storage compartment, below the second shelf, houses other electronics such as the optional CPU's and additional equipment.

The MEO-6000m offers easy cleaning of the removable stainless steel trays. The T-slot frame construction allows for optional accessory mounting, providing unlimited custom configurations, strength and durability for years of reliable service.



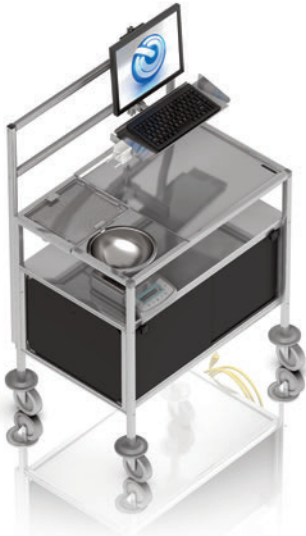
## Features & Benefits

- Mounting posts place keyboard, screen, ID-scanner, and other RFID reader system components at proper height
- Top trays rest on frame, and are easily removable and interchangeable
- Top surface trays slide easily; weighing balance can be positioned in any corner
- Four swivel casters (two with locks) and polyurethane wheels for easy rolling
- Two 5-outlet power strips are installed in cabinet (International models are available upon request)

[www.BMDs.com](http://www.BMDs.com)

# MEO-6000m Functional Overview

## Related Products



DAS-8001



### Physical Characteristics

Weight: 115 lbs.  
 Length: 35.5 inches  
 Height: 57 inches  
 Width: 24.5 inches

### Construction

6105-T5 High Tensile Strength Aluminum frame  
 Stainless Steel Shelving  
 High Pressure laminate Trespa™ Panels

### Wheels

5 inches in diameter x 2 inches wide polyurethane casters

25 foot long AC cord and two 5-outlet power strips are installed in the cabinet (international models are available upon request)

### Hardware

\*\*Keyboards, Monitors, Scales, Bar Code Scanners, and RFID Readers and system components are featured for illustration purposes only

### Warranty

90 Days parts & labor

*Design and specifications are subject to change without notice. Please visit us on the web at [www.BMDS.com](http://www.BMDS.com) for the latest information, specifications, demonstrations, training and more!*



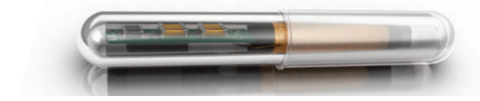
IMI-1000



IPT-300



IPTT-300



*Enlarged to show details*

DAS-7006/7 R



**World Headquarters**  
 Bio Medic Data Systems, Inc.  
 1 Silas Road  
 Seaford, Delaware 19973 U.S.A.  
 Telephone: (302) 628-4100  
 Toll Free: (800) 526-2637  
 FAX: (302) 628-4110  
[www.BMDS.com](http://www.BMDS.com)

*Visit us online at [www.BMDS.com](http://www.BMDS.com) for the latest information, specifications, demonstrations, training and more!*

*Positive Animal Identification*

© Copyright Bio Medic Corporation 2013, BMDS, Implantable Programmable Temperature Transponder, and the BMDS logo are trademarks of Bio Medic Data Systems, Inc. Covered by various U.S. and International patents and patents pending. U.S. Patent Nos. 5,481,262; 5,422,636; 5,074,318; 5,024,727; 5,252,962; 5,274,030; 5,420,579; 5,250,944; 5,262,772; DES. 351,151; DES. 330,891; 5,650,778; 5,002,548; 4,787,384; DES. 358,644. Design and specifications are subject to change without notice.